

Beaverkill or Conklin Bridge - NY-53-02

Lewbeach, NY - Sullivan County



Beaverkill bridge in the summer



Beaverkill Portal

Bridge Statistics

Region: *Catskills*

County: *Sullivan*



Town: *Rockland*

Locality: *Lewbeach*

Position - Lat: *N 41° 58.865'*

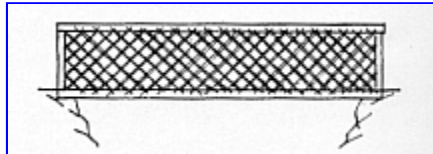
Lon: *W 74° 50.183'*

Bridge Carries: *Beaverkill Camp Road*

Bridge Crosses: *Beaverkill*

Bridge Traffic: *Vehicular*

Truss Type: *Town Lattice Truss*



Year Built: *1865*

Builder: *John Davidson*

Length: 128 Ft.

Structure Characteristics: *Span: 100 Ft.*

Width: 14.7 Ft.

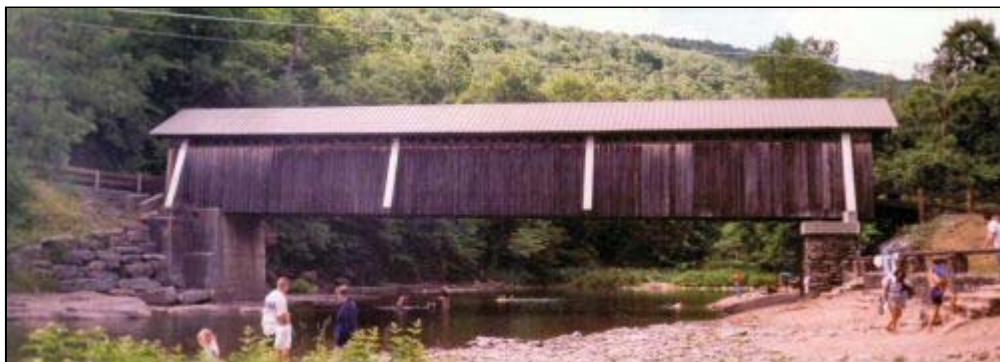
Posted Load: *3 Tons*

Posted Vertical Clearance: *6'-6"*

World Guide No.: *32-53-02*

National Register of Historic Places

Date: *Not yet but work in progress.*



Panoramic view of Beaverkill Bridge

Description

Nice looking bridge in Beaverkill State Park. The bridge is one span 98 feet long town lattice truss. Built in 1865, southwest of Lewbeach. Happen on this bridge while looking for a bridge in Ulster Co. This is a historic bridge. Too many campers and swimmers in the creek. Visited in September 1996. This bridge was closed to traffic in 1997 due to structural problems.

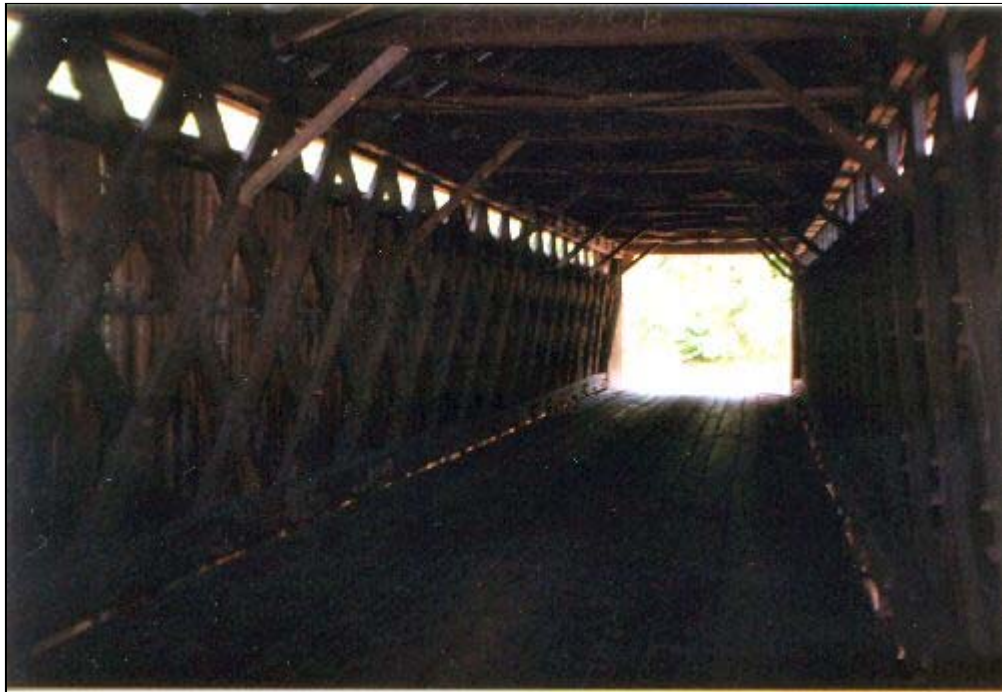
Photography

The park on the north side of the bridge is an excellent area to take photographs of this bridge. Easy access under bridge on south side, good for underside and panoramic photos.

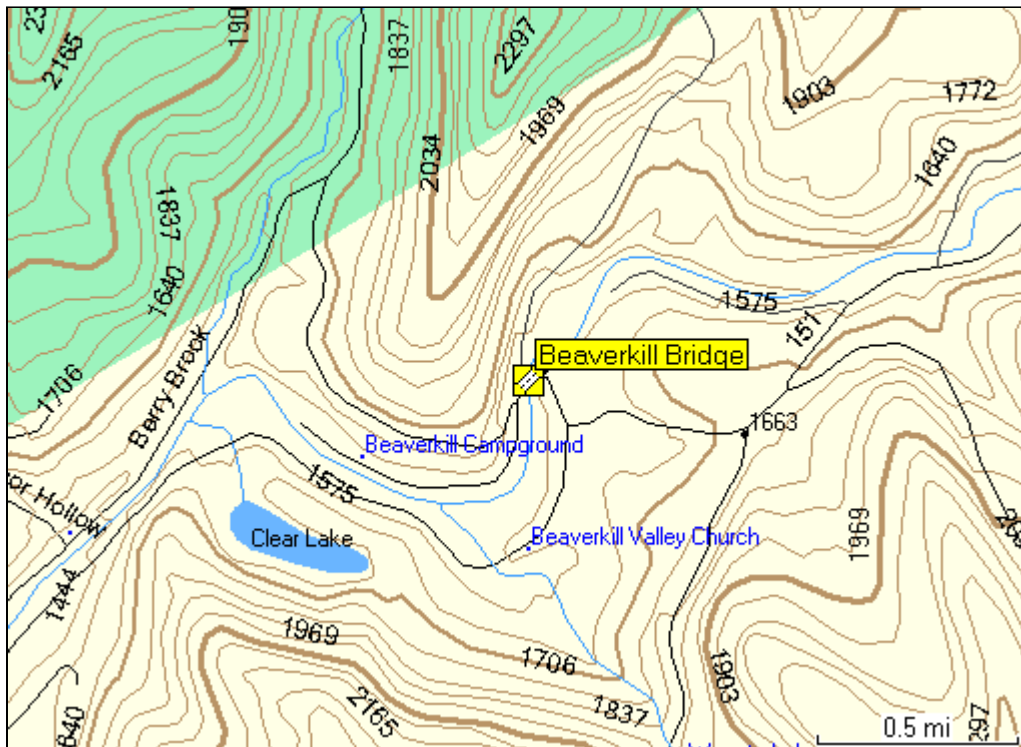
Parking

Parking available in park near the bridge.

Truss



Location Map



Location

From NY17 Exit 96, take CR82 for .3 miles, then 1.3 miles on the right take old Route 17 (CR179) 4.8 miles, right on Beaverkill Road (CR151) .5 miles then left on Beaverkill Camp Road then .1 miles left to the bridge. In Beaverkill State Park.



[Return to New York Covered Bridges](#)

Last Modified: February 19, 2005 5:46:20 P.M.