

## **Fitches Bridge - NY-13-02**

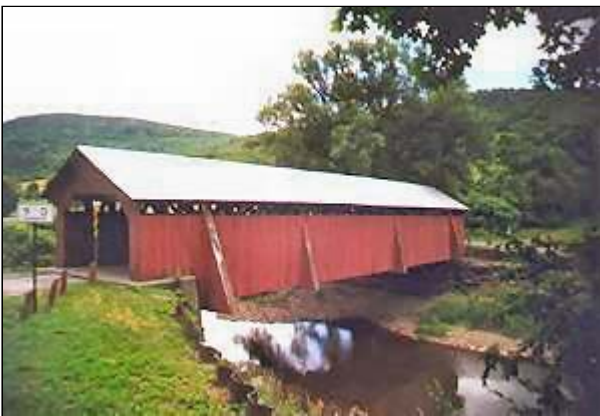
Delhi, NY - Delaware County



Fitches bridge on January 5, 2002



Fitches Bridge Portal - January 5, 2002



Fitches bridge before 2001

## Bridge Statistics

**Region:** *Catskills - Delaware River Valley*

**County:** *Delaware*



**Town:** *Delhi*

**Locality:** *East Delhi*

**Position - Lat:** *N 42 17.862*

**Lon:** *W 74 52.763*

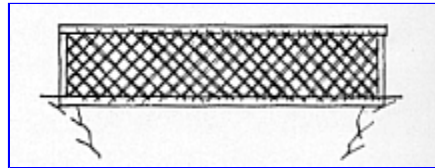
**Owner:** *Unknown*

**Bridge Carries:** *Fitches Bridge Road*

**Bridge Crosses:** *West Branch Delaware River*

**Bridge Traffic:** *Vehicular*

**Truss Type:** *Town Lattice*



**Year Built:** *1870*

**Builder:** *James Frazier & James Warren*

**Moved By:** *David Wright*

*Length: 100'-0"*

**Structure Characteristics:** *Width: Unknown*

*Lanes: 1*

**Posted Load:** *3 Tons*

**Posted Vertical Clearance:** *9'-0"*

**World Guide No.:** *32-13-02*

**National Register of Historic Places**

**Date:** *April 29, 1999*

## Description

This historical covered bridge is located in East Delhi NY, Delaware County. The bridge carries Fitches Bridge Road over the West Branch of the Delaware River. It is a 100 foot long Town Lattice Truss. This bridge was built in 1870 in Delhi on Kingston Street, in 1885 a bridge company persuaded town officials to replace the bridge with an iron structure. Rather than demolish a comparatively new covered bridge, it was decided to moved this bridge three miles upstream from its present location to replace a bridge washed away by floodwaters. Divid Wright and a town crew dismantled the bridge and hauled it to East Delhi, to its present location. A major rehabilitation took place in 2001. See additional information below.

## Photography

Good locations for portal shots on either end of bridge. Elevation views from stream or from above bridge along NY10.

## Parking

Cross bridge from NY10, parking on road parallel to NY10.

## Additional Information / Web Links

Major rehabilitation in 2001. [Rehab Link](#)

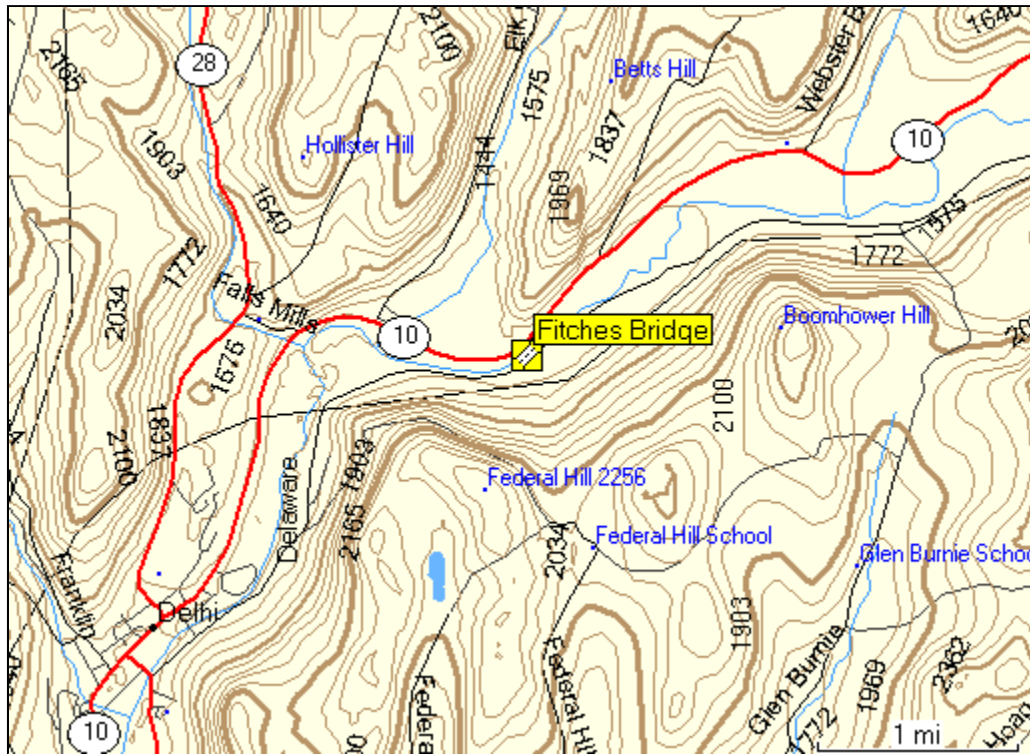
[Fitches Family Link](#)

## Truss / Arch



Town Lattice Truss

## Location Map



### Location

3.5 miles northeast of junction NY28 and Delhi on NY10, then just right on Fitches Bridge Road. The bridge is located near East Delhi in Delaware County.



[Return to New York Covered Bridges](#)