

**Mill Brook Bridge
Grants Mills
NY-56-06**

Hardenbergh, NY - Ulster County



Photo of Grants Mills Bridge



Grants Mills Bridge Portal

Bridge Statistics

Region: *Catskills*

County: *Ulster*



Town: *Arkville*

Locality: *Hardenbergh*

Position - Lat: *N 42° 04.840'*

Lon: *W 74° 39.502'*

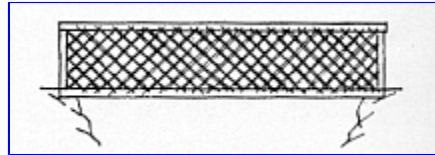
Owner: *Town*

Bridge Carries: *Bypassed Mill Brook Road*

Bridge Crosses: *Mill Brook*

Bridge Traffic: *Closed*

Truss Type: *Town Lattice*



Year Built: *1902*

Builder: *Edgar Marks, Orrin B. Marks and Wesley Alton*

Length: 66'-0"

Structure Characteristics: *Width: 17'-6"*

Lanes: 1

Posted Load: *None*

Posted Vertical Clearance: *None*

World Guide No.: *32-56-06*

National Register of Historic Places

Date: *December 17, 1998*

Description

The Grants Mills Bridge is on Mill Brook Road just across the Delaware-Ulster county line in Ulster County. This bridge is a town truss built in 1902 and completely rehabilitated in 1992. It has one span of 66 feet. An historic covered bridge, the Grants Mills bridge is closed to vehicular traffic. It is located 2.2 miles south of the trail leading to the Tuscarora Club bridge located in Delaware county.

Photography

Easy to photograph portal since the bridge has no traffic. Easy to get nice photo of side view of bridge from near new bridge.

Parking

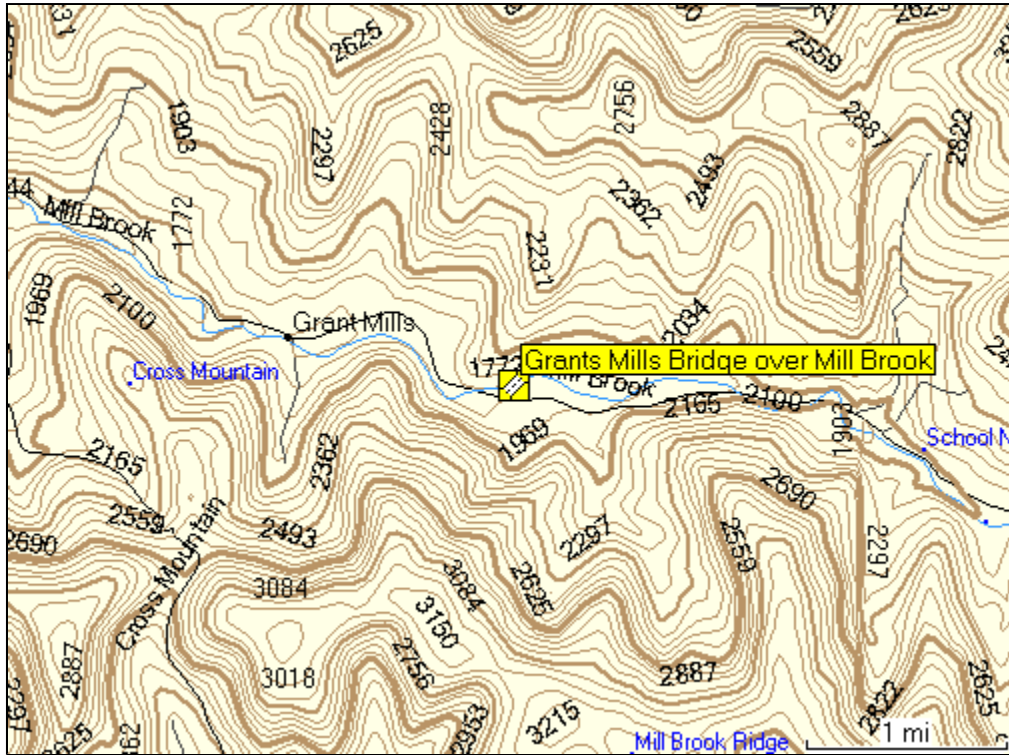
A few parking spaces are available near the bridge.

Truss / Arch



Town Lattice Truss

Location Map



Location

2.2 miles southwest of junction NY30 and Margaretville on NY28, then 0.3 miles left and 0.3 miles right on NYC road along Pepacton Reservoir and 5.0 left on N side of bypassed section of Mill Brook Rd. This bridge is south of Margaretville, in Ulster County.



[Return to New York Covered Bridges](#)