

Halls Mills Bridge
NY-53-01

Neversink, NY - Sullivan County

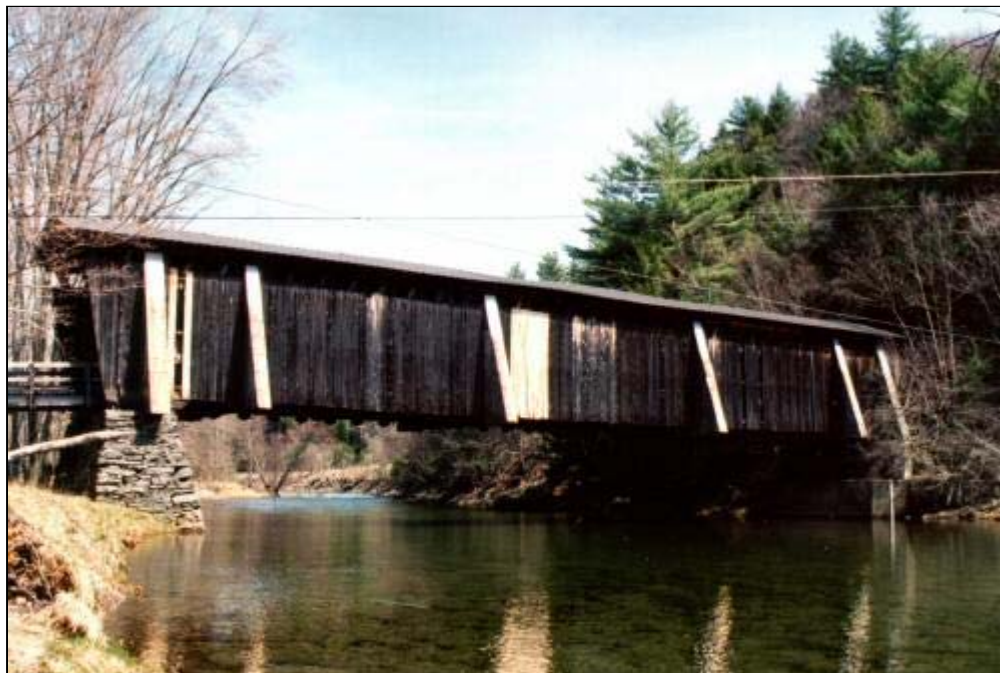


Photo of Halls Mills Bridge



Halls Mills Bridge Portal



Halls Mills Bridge during flooding in April 2005

Bridge Statistics

Region: *Catskills - Route 17 / I86*

County: *Sullivan*



Town: *Neversink*

Locality: *Neversink*

Position - Lat: *N 41 53.585*

Lon: *W 74 35.207*

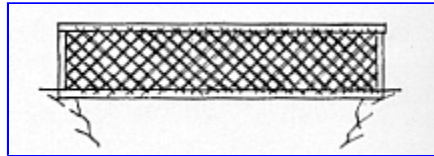
Owner: *Town*

Bridge Carries: *Foot Trail*

Bridge Crosses: *Neversink River*

Bridge Traffic: *Closed*

Truss Type: *Town Lattice*



Year Built: *1912*

Builder: *David Benton and John Knight*

Length: 130'-0"

Structure Characteristics: *Width: 18'-3"*

Lanes: 1

Posted Load: *None*

Posted Vertical Clearance: *8'-0"*

World Guide No.: *32-53-02*

National Register of Historic Places

Date: *Unknown*

Description

Built in 1912 this historic town lattice truss crosses the Neversink River. A parking lot provides two or three spaces off the road. This bridge has a short timber approach span. The main span is 119 feet. Our visit was on 4/11/98. There is a gauging station just downstream of the bridge.

Photography

Easy to photograph portal since the bridge has no traffic. Easy to get nice photo of side view of bridge from multiple angles.

Parking

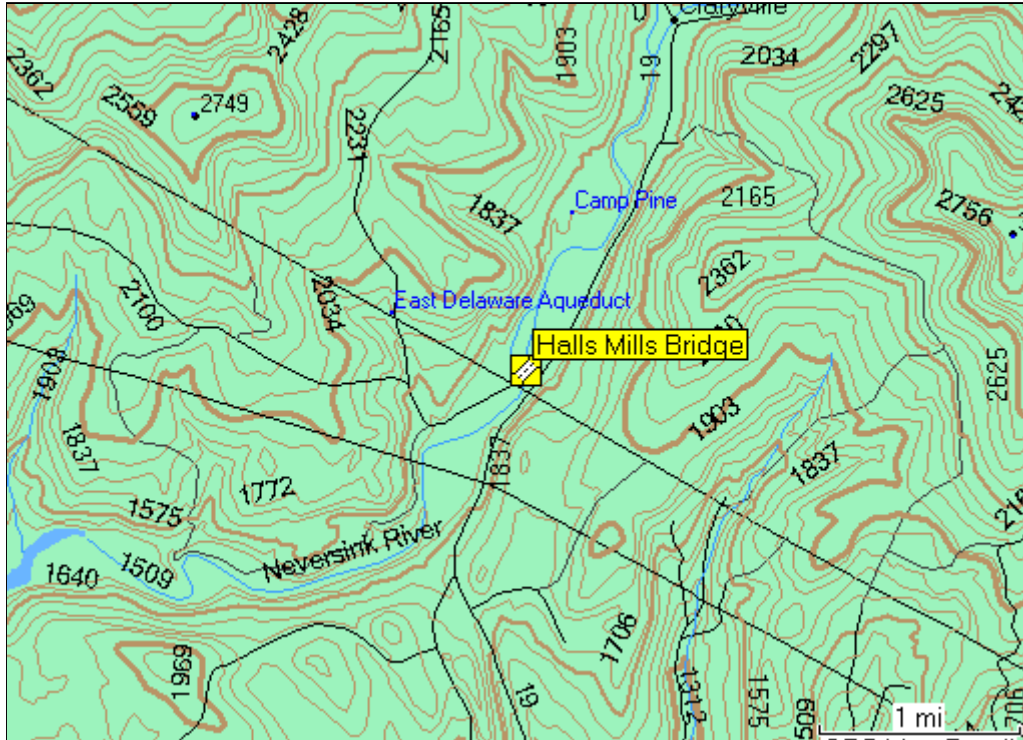
A small parking area is available near the bridge.

Truss / Arch



Town Lattice Truss

Location Map



Location

2.7 N of NY55 and Curry on C19, then 0.3 left to bypassed section of Hunter Rd. Walk 0.2 S. In North Curry, Sullivan County.



[Return to New York Covered Bridges](#)