

Jay Bridge - NY-16-01

Jay, NY - Essex County



Jay bridge before June 12, 1997



Jay Bridge Portal - before June 12, 1997

Bridge Statistics

Region: *Adirondack*

County: *Essex*



Town: *Jay*

Locality: *Jay*

Position - Lat: *N 44° 22.329'*

Lon: *W 73° 43.487'*

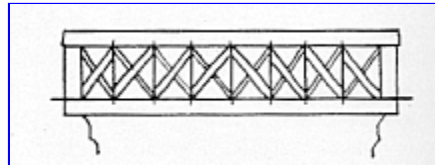
Owner: *Essex County*

Bridge Carries: *County Route 22*

Bridge Crosses: *East Branch AuSable River*

Bridge Traffic: *Vehicular*

Truss Type: *Howe*



Year Built: *1857*

Builder: *George W. Burr*

Length: 175'-0"

Structure Characteristics: *Width: 20'-9"*

Lanes: 1

Posted Load: *3 Tons*

Posted Vertical Clearance: *8'-0"*

World Guide No.: *32-16-01*

National Register of Historic Places *Listed on State Register, will qualify for
Date: listing on National Register once it is put
back across the Ausable River.*

Description

This historical bridge built in 1851 is a Howe Truss with a span of 175 feet.. It originally carried County Road 22 across the Ausable River, In June 1997 it was cut into four pieces and removed from its foundations by the county. See additional information below.

Photography

Bridge is easy to photograph in its present location in the park near the place it once spanned.

Parking

Parking in park near bridge.



Jay Bridge photos after June 12, 1997



Jay Bridge photos October 3, 2004

Additional Information / Web Links

[Natives and Outsiders at the Jay Covered Bridge](#)

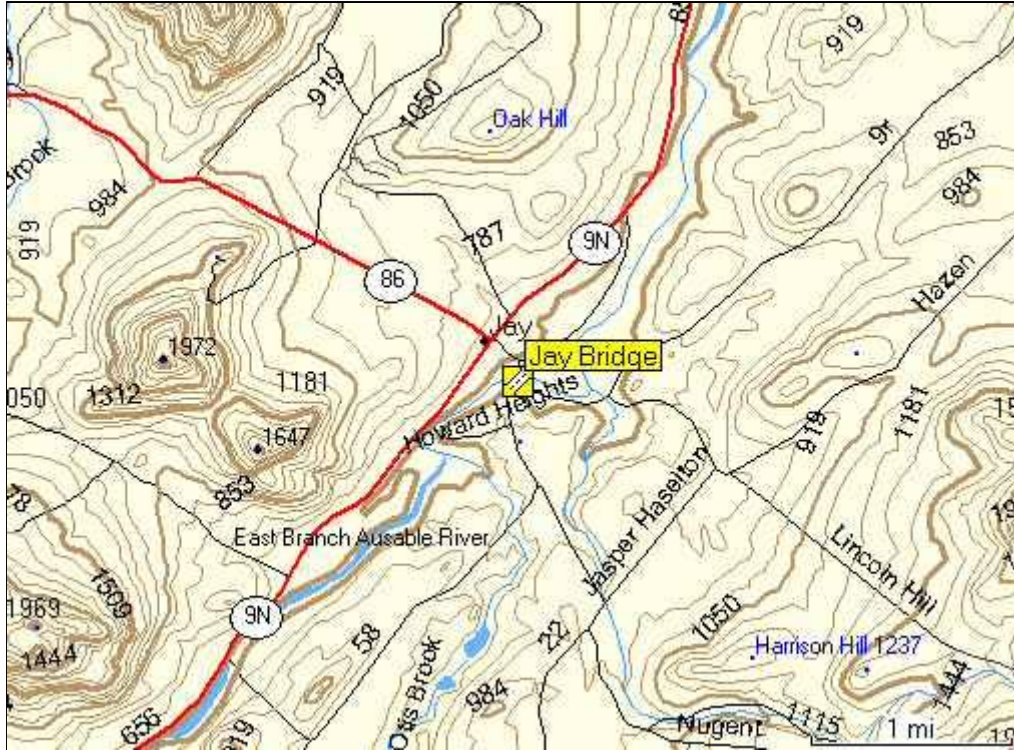
[Jay Bridge Restoration Progress and Bridge History](#)

Truss / Arch



Howe Truss

Location Map



Location

0.2 miles east junction NY9N/86 on road opposite NY86, then 0.1 miles right. The bridge is located in Jay in Essex County.



[Return to New York Covered Bridges](#)