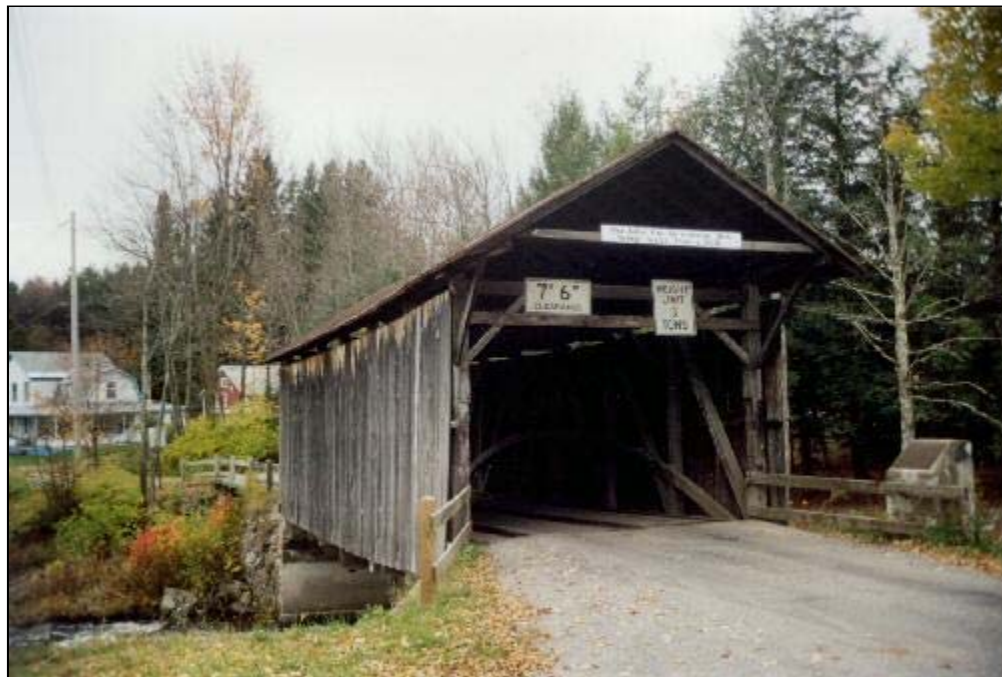


## Salisbury Center Bridge - NY-22-01

Salisbury Center, NY - Herkimer County



Photo of Salisbury Center Bridge

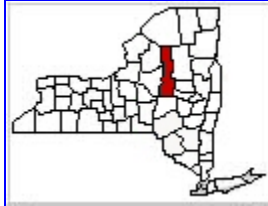


Salisbury Center Bridge Portal

## Bridge Statistics

**Region:** *Leatherstock*

**County:** *Herkimer*



**Town:** *Salisbury*

**Locality:** *Salisbury Center*

**Position - Lat:** *N 43° 08.383'*

**Lon:** *W 74° 47.059'*

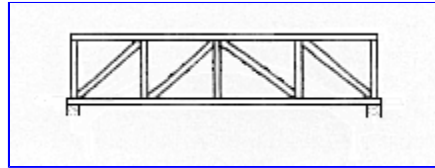
**Owner:** *Town*

**Bridge Carries:** *Fairview Road*

**Bridge Crosses:** *Spruce Creek*

**Bridge Traffic:** *Vehicular*

**Truss Type:** *Multiple Kingpost with Arch*



**Year Built:** *1875*

**Builder:** *Alvah Hopson*

*Length: 50'-0"*

**Structure Characteristics:** *Width: 15'-4"*

*Lanes: 1*

**Posted Load:** *3 Tons*

**Posted Vertical Clearance:** *7'-6"*

**World Guide No.:** *32-22-01*

**National Register of Historic Places**

**Date:** *June 19, 1972*

### Description

This bridge in Salisbury Center, carries Fairview Road over Spruce Creek. It is a 50 foot span Kingpost with an Arch, built in 1875.

### Photography

Easy to photograph portal since the bridge has no traffic. There is a small park with many great locations for photographs from the creek.

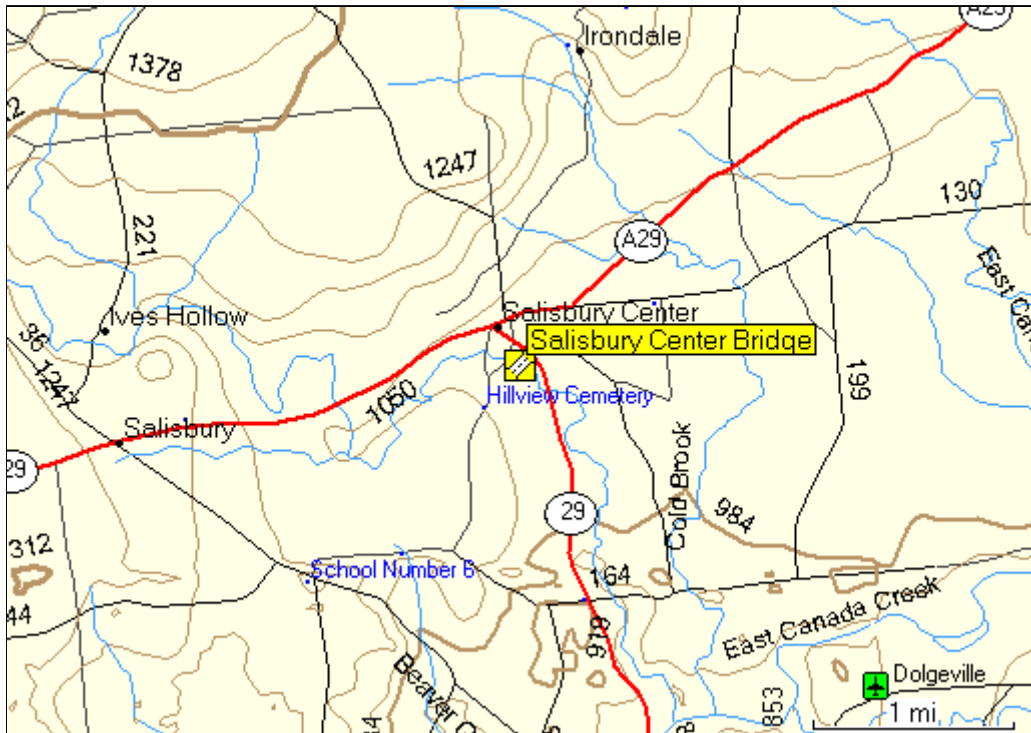
### Parking

Parking available in parking lot near bridge.

### Truss / Arch



## Location Map



### Location

0.1 miles southeast of junction NY29A on NY29, then 0.1 miles right on Fairview Rd. The bridge is located in the village of Salisbury Center in Herkimer County.



[Return to New York State Covered Bridges](#)