

**Tappan / Kittle Bridge**  
**NY-56-03**

Hardenbergh, NY - Ulster County



Photo of Tappan Bridge



Tappan Bridge Portal

## Bridge Statistics

**Region:** *Ulster County*

**County:** *Ulster*



**Town:** *Arkville*

**Locality:** *Hardenbergh (Seager)*

**Position - Lat:** *N 42 08.051*

**Lon:** *W 74 35.153*

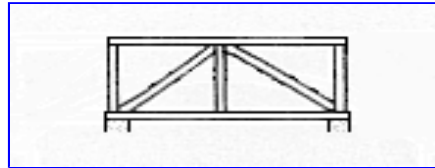
**Owner:** *Town*

**Bridge Carries:** *Erickson Road*

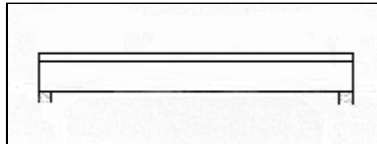
**Bridge Crosses:** *Dry Brook*

**Bridge Traffic:** *Vehicular*

**Original Truss Type:** *Kingpost*



**New Superstructure Type:** *Stringer*



**Year Built:** *1870*

**Year Stringers added:** *1985*

**Builder:** *Jerome Moot*

*Length: 43'-0"*

**Structure Characteristics:** *Width: 12'-4"*

*Lanes: 1*

**Posted Load:** *None*

**Posted Vertical Clearance:** *Unknown*

**World Guide No.:** *32-56-03*

**National Register of Historic Places**

**Date:** *Unknown*

### Description

The Tappan Bridge is South East of Arkville off Dry Brook Road, crossing Dry Brook. This bridge is a King Truss, 43-foot long, single-span, built in 1906, rebuilt in 1985 without a functional truss.

### Photography

Easy to photograph portal since the bridge has light traffic. Easy to get nice photo of side view of bridge when leaves are off trees.

### Parking

A few pulloff are available for parking along Dry Brook Road.

### Truss / Arch

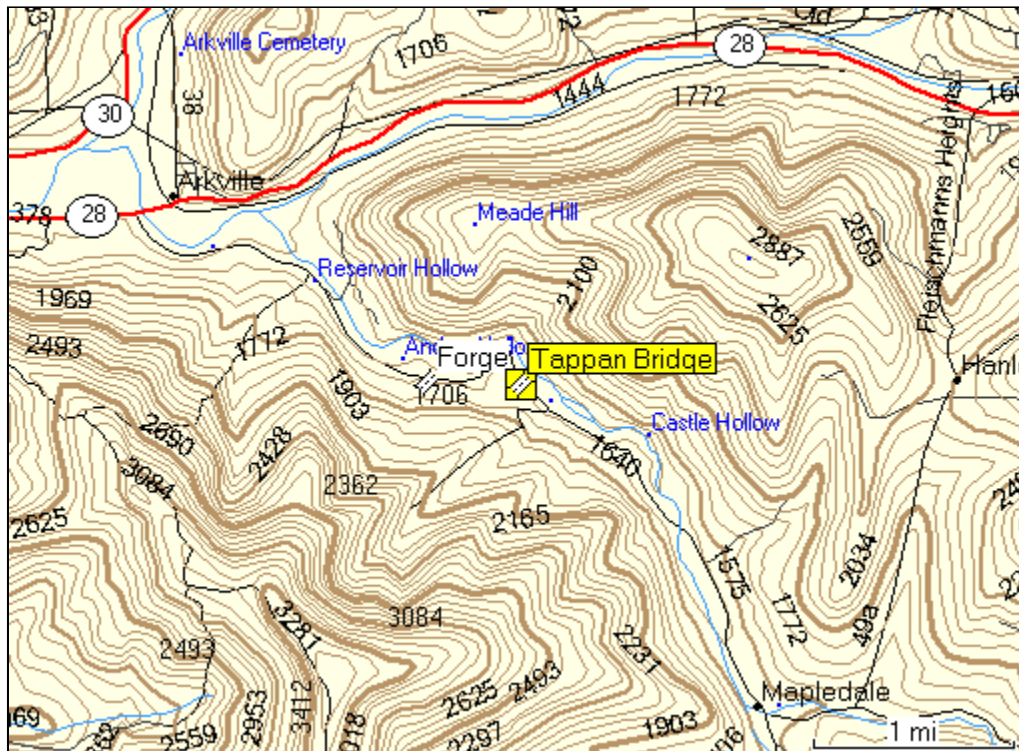


Kingpost Truss

### Stringer Span

No photo available

## Location Map



### Location

0.2 miles west of CR38 and Arkville on NY28, then 8.5 miles left on Dry Brook Road and just left on Erickson Road. This bridge is in North Seager, Ulster County.



[Return to New York Covered Bridges](#)