

Forge Bridge
NY-56-02

Hardenbergh, NY - Ulster County



Photo of Forge Bridge



Forge Bridge Portal

Bridge Statistics

Region: *Catskills*

County: *Ulster*



Town: *Arkville*

Locality: *Hardenbergh (Seager)*

Position - Lat: *N 42 08.062*

Lon: *W 74 35.706*

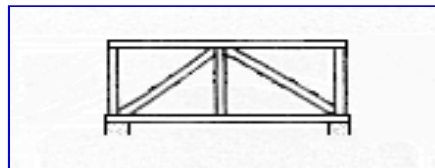
Owner: *Town*

Bridge Carries: *Private Road*

Bridge Crosses: *Dry Brook*

Bridge Traffic: *Closed*

Truss Type: *Kingpost*



Year Built: *1906*

Builder: *Jerome Moot*

Length: 27'-0"

Structure Characteristics: *Width: 12'-9"*

Lanes: 1

Posted Load: *None*

Posted Vertical Clearance: *None*

World Guide No.: *32-56-02*

National Register of Historic Places

Date: *Application currently in works*

Description

The Forge Bridge is South East of Arkville off Dry Brook Road, crossing Dry Brook. This bridge is a King Truss, 27-foot long single-span, built in 1906. The Forge Bridge is on private property, please ask for permission to visit.

Photography

Easy to photograph portal since the bridge has light traffic. Easy to get nice photo of side view of bridge when leaves are off trees.

Parking

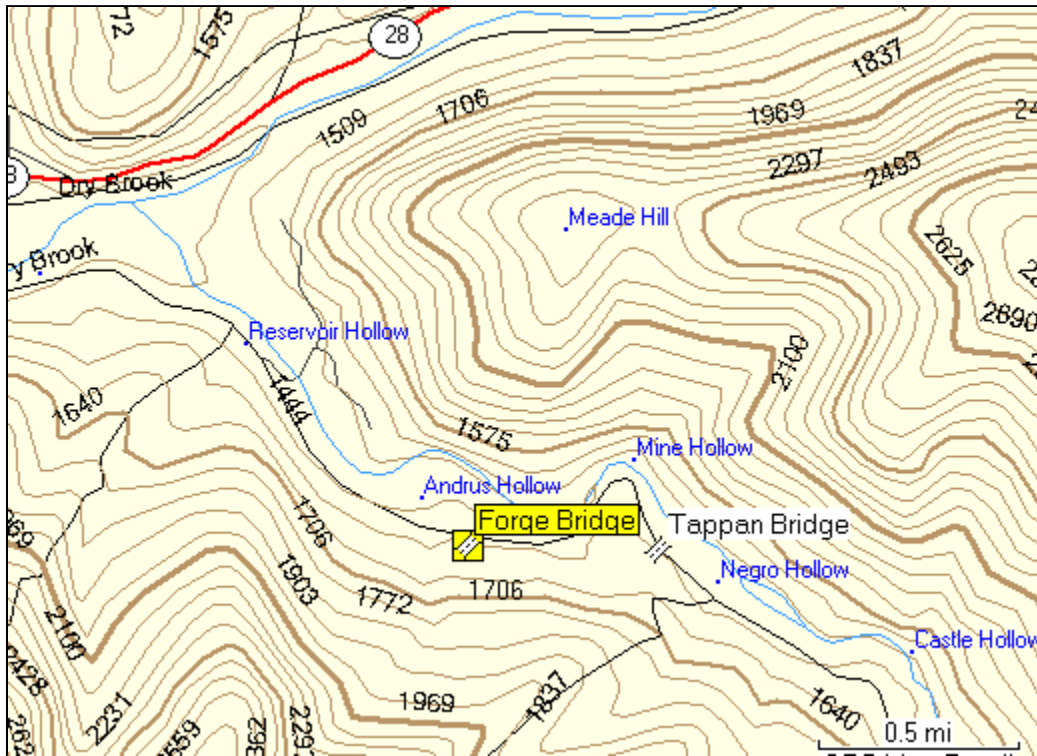
A few pulloff are available for parking along Dry Brook Road.

Truss / Arch



Kingpost Truss

Location Map



Location

0.2 miles west of CR38 and Arkville on NY28, then 7.6 miles left on Dry Brook Rd and just right. This bridge is in North Seager, Ulster County.



[Return to New York Covered Bridges](#)