

**New Paltz Campus  
Ashokan  
Olive  
Turnwood Bridge  
NY-56-05**

Olive, NY - Ulster County

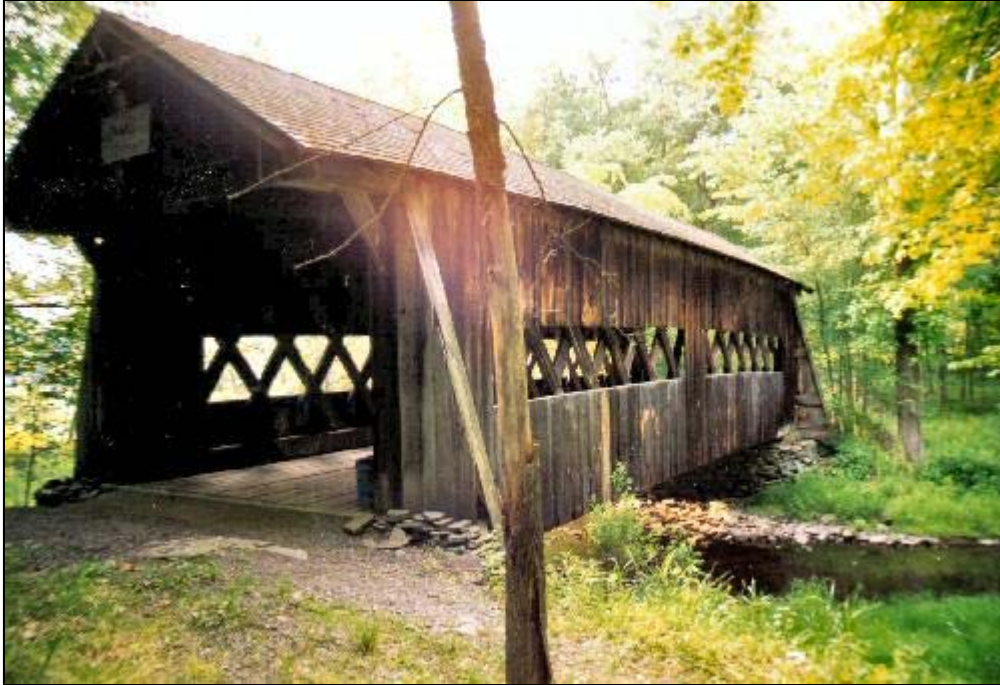


Photo of New Paltz Campus Bridge



New Paltz Campus Bridge Portal

## Bridge Statistics

**Region:** *Ulster County*

**County:** *Ulster*



**Town:** *Arkville*

**Locality:** *Hardenbergh*

**Position - Lat:** *N 41° 55.294'*

**Lon:** *W 74° 12.606'*

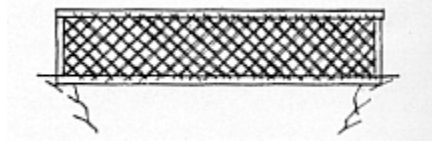
**Owner:** *Private*

**Bridge Carries:** *Foot Path*

**Bridge Crosses:** *Old Channel of Esopus Creek*

**Bridge Traffic:** *Pedestrian*

**Original Truss Type:** *Town Lattice*



**Year Built:** *1885*

**Builder:** *Nelson Tompkins*

*Length: 62'-0"*

**Structure Characteristics:** *Width: 16'-5"*

*Lanes: 1*

**Posted Load:** *None*

**Posted Vertical Clearance:** *10'-6"*

**World Guide No.:** *32-56-05*

**National Register of Historic Places**

**Date:** *July 20, 2000*

### Description

Also known as the Olive or Turnwood Bridge, East of Olivebridge on the New York State University Campus, this bridge was built in 1889 but moved to its current location in 1930. The bridge crosses the Old Channel of the Esopus Creek, is a Town Lattice, 62-foot long, single-span structure.

### Photography

Easy to photograph portal since the bridge has no traffic. Easy to get nice photo of side view of bridge when leaves are off trees.

### Parking

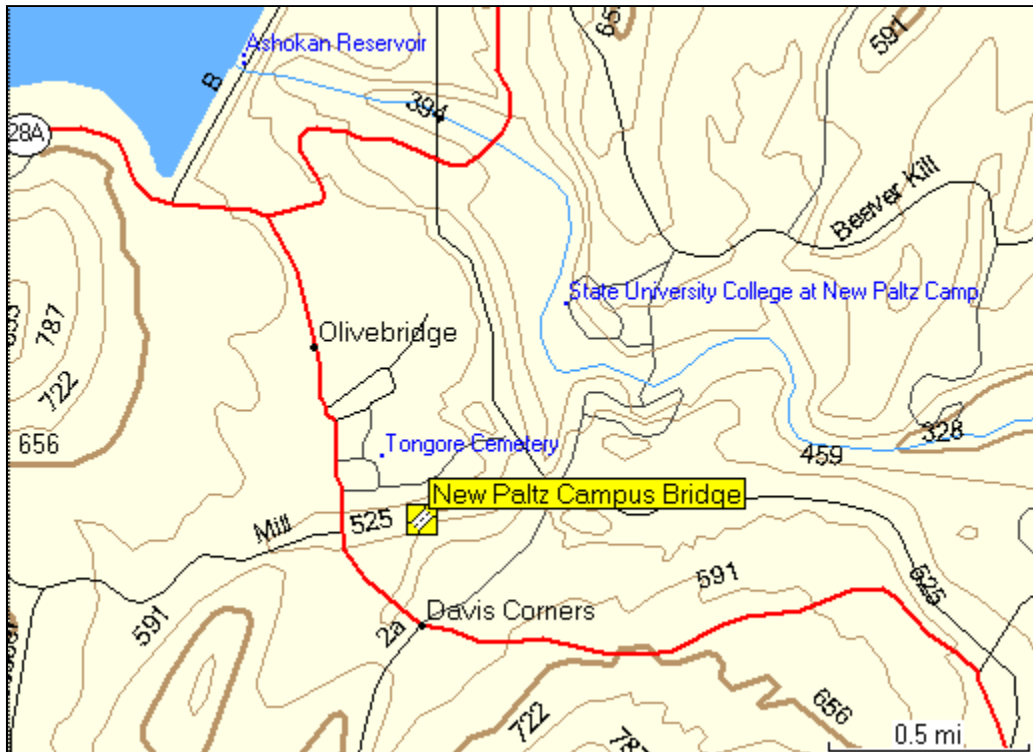
There are parking lots on the campus near the bridge.

### Truss / Arch



Town Lattice Truss

## Location Map



### Location

1.5 miles northeast of NY213 and Olivebridge on NY28A, then 1.0 miles right on Beaverkill Road to main gate of New Paltz Campus of New York State University, then 0.1 miles right to parking area and walk 0.5 miles south. East of Olivebridge in Ulster County.



[Return to New York Covered Bridges](#)